

GLOBAL OVERVIEW | SELECTED INDICES

SOUTH AFRICAN INDICES						
	CLOSE	PREVIOUS	1D%	5D%	1M%	YTD%
All Share	73551.12	73363.56	0.26	-1.30	0.41	-4.35
Top 40	67496.66	67313.61	0.27	-1.25	0.71	-4.25
Financial 15	15615.76	15499.12	0.75	-1.34	-5.48	-12.63
Industrial 25	101059.67	98700.60	2.39	0.91	0.28	-2.56
Resource 10	60936.77	63284.45	-3.71	-4.61	8.98	5.92
Mid Cap	75872.27	76241.90	-0.48	-2.55	-1.69	-5.65
Small Cap	70468.88	70389.15	0.11	-0.63	-0.36	-2.79
Banks	9609.19	9511.01	1.03	-1.46	-4.52	-12.23
Retailers	5466.44	5391.08	1.40	-1.73	-7.04	-12.31
Property (J253) - TR	1867.02	1861.80	0.28	-1.94	-2.97	0.18

AMERICAN INDICES						
	CLOSE	PREVIOUS	1D%	5D%	1M%	YTD%
Dow Jones	38239.98	37986.40	0.67	1.34	-3.13	1.46
Nasdaq	15451.31	15282.01	1.11	-2.73	-5.95	2.93
S&P 500	5010.60	4967.23	0.87	-1.01	-4.27	5.05
US VIX	16.94	18.71	-9.46	-11.91	29.71	36.06

EUROPEAN INDICES						
	CLOSE	PREVIOUS	1D%	5D%	1M%	YTD%
CAC 40	8040.36	8022.41	0.22	-0.06	-1.37	6.59
DAX 30	17860.80	17737.36	0.70	-0.92	-1.90	6.62
Eurostoxx 50	4938.50	4917.55	0.43	-0.91	-1.84	9.22
FTSE	8023.87	7895.85	1.62	0.73	1.17	3.76

ASIAN INDICES						
	CLOSE	PREVIOUS	1D%	5D%	1M%	YTD%
Hang Seng	16511.69	16224.14	1.77	-0.53	0.07	-3.14
Nikkei 225	37438.61	37068.35	1.00	-4.57	-8.44	11.88
Shanghai	3044.60	3065.26	-0.67	-0.42	-0.11	2.34

EARLY MORNING MARKETS						
	LAST	CLOSE	% CHG	1D%	5D%	YTD%
TENCENT	330.20	320.40	3.06	5.46	5.26	9.13
BHP AUS	4557.00	4542.00	0.33	1.77	-0.76	-9.90

NOTE : 5D% and 1M% are rolling percentage moves

INTERNATIONAL ECONOMIC CALENDAR | SELECTED EVENTS

TIME	AREA	TODAY'S EVENTS & RELEASES	PERIOD	EXP.	PREV.
9:30	EA	German Flash Manufacturing PMI	---	42.80	41.90
10:00	EA	Flash Manufacturing PMI	---	46.50	46.10
10:30	GBP	Flash Manufacturing PMI	---	50.30	50.30
15:45	USD	Flash Manufacturing PMI	---	52.00	51.90
---	---	---	---	---	---

TIME	AREA	PREVIOUS SESSION'S RELEASES	PERIOD	EXP.	ACT.
17:30	EA	ECB President Lagarde Speech	---	---	---
---	---	---	---	---	---
---	---	---	---	---	---
---	---	---	---	---	---
---	---	---	---	---	---

JSE ALL SHARE | BEST AND WORST ONE-DAY PERFORMERS

BEST ONE-DAY % PERFORMERS						
	CODE	CLOSE	1D%	5D%	YTD%	
Naspers Ltd -N-	NPN	343179	5.35	4.48	9.71	
Prosus N.V.	PRX	60950	4.60	3.11	8.76	
Transaction Capital Ltd	TCP	270	3.85	-5.26	-66.17	
Sun International Ltd	SUI	3800	3.83	1.74	-7.32	
Life Healthc Grp Hldgs Ltd	LHC	1032	2.99	-0.39	-43.82	
South32 Limited	S32	4150	2.98	-1.78	-1.64	

WORST ONE-DAY % PERFORMERS						
	CODE	CLOSE	1D%	5D%	YTD%	
Anglo American Plat Ltd	AMS	73089	-6.34	-12.84	-24.18	
AngloGold Ashanti plc	ANG	42488	-5.85	-7.67	20.22	
DRD Gold Ltd	DRD	1555	-5.41	-4.19	-1.40	
Gold Fields Ltd	GFI	32360	-5.20	-5.51	16.50	
Impala Platinum Hlgs Ltd	IMP	9175	-5.18	-4.65	0.53	

DIVIDEND DATA

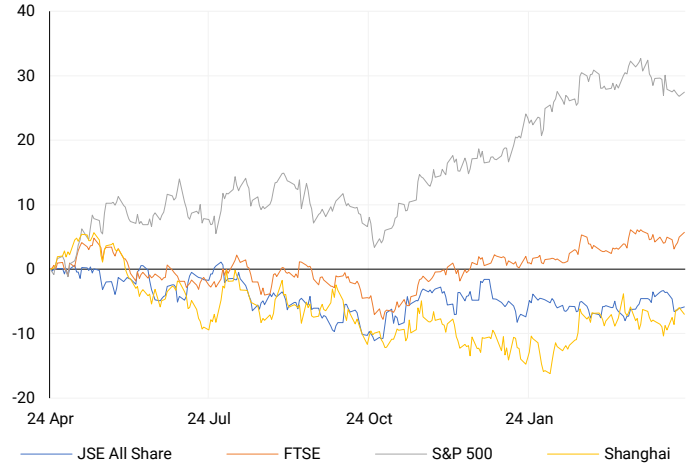
COMPANY	CODE	EXPECTED DIVIDEND	COMPANY	CODE	EXPECTED DIVIDEND
Wilson Bayly Holmes - Ovcon	WBO	685 ZARc	---	---	---
IBEX Investment Holdings	IBX	1000 ZARc	---	---	---
Shaftesbury Capital PLC	SHC	80 ZARc	---	---	---
aReit Prop	APO	65 ZARc	---	---	---
Barloworld	BAWP	330 ZARc	---	---	---

SOURCES | JSE, IRESS, MONEYWEB, CNBC, BBC, CNN

PLEASE SEE THE BOTTOM OF THE LAST PAGE FOR THE FULL DISCLAIMER

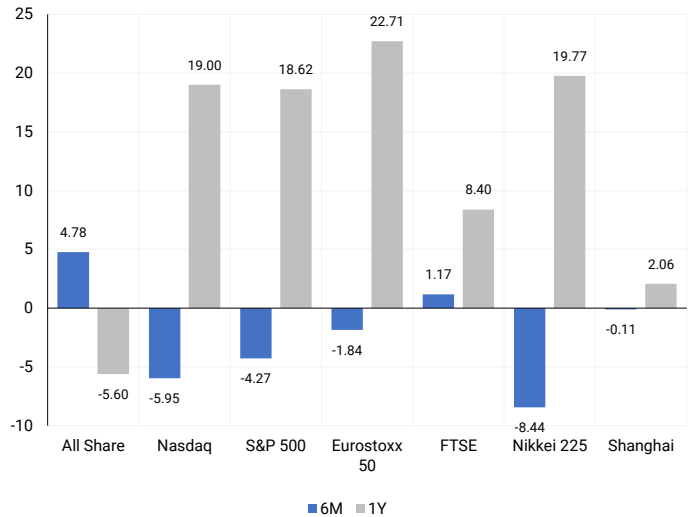
INTERNATIONAL INDICES

Normalised percentage performances - In rand terms



INTERNATIONAL INDICES

6-month & 1-year percentage performances



JSE ALL SHARE INDEX

2023 v 2024 to date



Last date to trade

Tue, 23 April

LOCAL EQUITIES | JSE LARGE CAP COMPANIES (Cents Per Share)

COMPANY	CLOSE	PREVIOUS	1D%	5D%	1M%	YTD%
Absa Group Limited	14079	14001	0.56	-3.32	-4.91	-14.00
Anglo American plc	50620	51975	-2.61	-1.66	8.88	6.91
Anglo American Plat Ltd	73089	78035	-6.34	-12.84	-7.86	-24.18
Anglogold Ashanti Ltd	42488	45130	-5.85	-7.67	6.52	20.22
Anheuser-Busch InBev SA NV	113601	112015	1.42	2.09	0.40	-5.34
BHP Group Limited	55596	55809	-0.38	-1.90	1.99	-12.23
BID Corporation Ltd	42160	41550	1.47	-0.43	-7.38	-1.18
British American Tob plc	55600	54822	1.42	2.76	-2.55	2.68
Compagnie Fin Richemont	267075	267800	-0.27	-1.45	-6.43	4.02
Capitec Bank Hldgs Ltd	201666	200000	0.83	-1.31	-2.98	-0.48
Discovery Ltd	11144	10885	2.38	1.77	-12.25	-22.44
Firststrand Ltd	6094	5993	1.69	0.61	-1.71	-17.10
Gold Fields Ltd	32360	34135	-5.20	-5.51	12.62	16.50
Glencore plc	11248	11328	-0.71	-1.50	9.26	0.74
Impala Platinum Hlgs Ltd	9175	9676	-5.18	-4.65	12.62	0.53
Kumba Iron Ore Ltd	46000	47856	-3.88	-5.15	-1.04	-25.18
Mondi plc	35870	35554	0.89	7.35	10.10	-1.18
MTN Group Ltd	8299	8209	1.10	-4.88	-8.16	-28.15
Naspers Ltd -N-	343179	325739	5.35	4.48	10.87	9.71
Prosus N.V.	60950	58272	4.60	3.11	7.69	8.76
South32 Limited	4150	4030	2.98	-1.78	15.25	-1.64
Standard Bank Group Ltd	16915	16755	0.95	-3.41	-8.14	-18.72
Shoprite Holdings Ltd	23300	23153	0.63	-1.00	-7.17	-15.29
Sanlam Limited	6489	6461	0.43	2.72	-7.11	-10.87
Sasol Limited	15200	15702	-3.20	-8.73	5.45	-17.97
Sibanye Stillwater Ltd	2371	2470	-4.01	-8.10	9.31	-4.78
Vodacom Group Ltd	8865	8812	0.60	-3.41	-8.47	-16.37

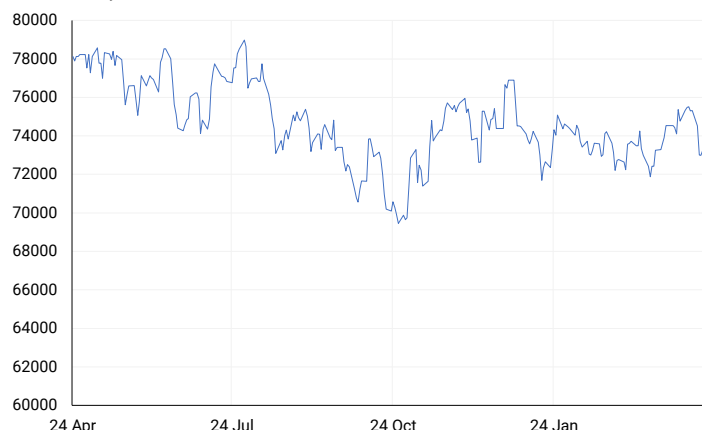
SOUTH AFRICAN MARKET SUMMARY

SELECTED ITEMS

Investors are awaiting the release of a key business cycle indicator on Tuesday, followed by March's producer price inflation report on Thursday. The focus will also be on upcoming data including the U.S. personal consumption expenditure (PCE) price index and the Q1 GDP report, which could offer insights into potential rate cuts by the Federal Reserve. On the stock market, both the Top-40 index and the broader all-share index closed around 0.3% higher. In other news, the World Health Organization announced that a contaminated batch of Benylin Paediatric Syrup is no longer available in African countries where it was sold. Nigeria previously recalled a batch of the children's cough and allergy medicine, with five other African nations also removing the product from shelves.

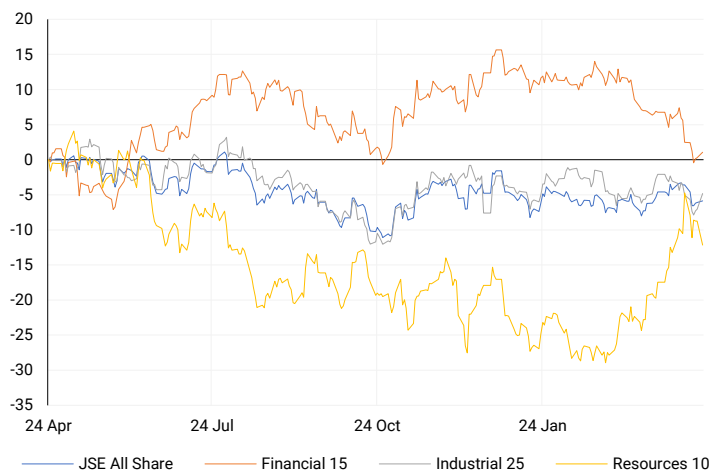
JSE TOP 40

One-year



LOCAL INDICES

Normalised percentage performances



EXPECTED COMPANY REPORTING SCHEDULE

COMPANY	CODE	RELEASE	DATE
Capitec	CPI	Final	23 Apr'24
Globe Trade Centre	GTC	Final	24 Apr'24
Clicks	CLS	Interim	25 Apr'24
Alphamin	APH	Quarterly	29 Apr'24
Pick n Pay	PIK	Final	03 May'24

BANK AND OTHER SELECTE PREFERENCE SHARES

COMPANY	CODE	CLOSE	CLEAN YIELD	NEXT LDT (Est.)
Investec Limited	INPR	8500	10.69	Thu, 06 Jun '24
Standard Bank	SBPP	8220	11.08	Thu, 28 Mar '24
Absa	ABSP	72774	11.18	Thu, 18 Apr '24
Capitec	CPIP	10400	10.15	Thu, 14 Mar '24
Steinhoff	SHFF	9355	12.21	Thu, 18 Apr '24
Grindrod	GNDP	8779	11.97	Thu, 21 Mar '24
Netcare	NTCP	8220	12.00	Thu, 09 May '24
Discovery	DSBP	9990	12.43	Thu, 07 Mar '24
Invicta	IVTP	9800	12.36	Thu, 27 Jun '24

LOCAL SENS ANNOUNCEMENTS

SELECTED RELEASE

CASHBUILD LIMITED – Third Quarter Operational Update – FY 2024

In the third quarter, the Group's revenue went up by 3% compared to the same time last year. Among the 312 stores that existed before July 2022, revenue increased by 2%, while the 9 new stores added 1% to the growth. When we add this to the results from the first half of the year, the total revenue increase so far is 3%. Transactions at the tills also rose by 1% compared to last year, with existing stores staying steady and new stores contributing to the growth. Additionally, selling prices increased by 2.4% by March 2024 compared to March 2023.

CSB | 1.77% OPEN | 14241c HIGH | 14500c LOW | 14241c CLOSE | 14350c TIME | 13:34

SOUTH32 LIMITED – Quarterly Report March 2024

In the fiscal year 2024, our production and operating costs are mostly as expected, except for Australia Manganese, which was impacted by Tropical Cyclone Megan. We reached significant milestones in transforming our portfolio, including finalizing investment for the Taylor zinc-lead-silver deposit and selling Illawarra Metallurgical Coal for up to US\$1.65B. Our aluminum production increased by 1% so far this year, with record production at Hillside Aluminium and progress towards full capacity at Brazil Aluminium. However, alumina production decreased by 1%, mainly due to planned maintenance at Worsley Alumina. Cannington payable zinc equivalent production saw a 15% increase, while Sierra Gorda payable copper equivalent production decreased by 13% due to lower copper grades and molybdenum recoveries. Cerro Matoso payable nickel production dropped by 5% overall but increased by 8% in the last quarter due to higher nickel grades. Illawarra Metallurgical Coal's saleable coal production surged by 60% in the quarter, thanks to improved longwall performance. Australia Manganese operations were temporarily halted in March due to Tropical Cyclone Megan, with recovery efforts underway. On a positive note, South Africa Manganese achieved record production, with an 8% increase year to date.

S32 | 2.98% OPEN | 4073c HIGH | 4166c LOW | 4000c CLOSE | 4150c TIME | 07:32

LOCAL EQUITIES | JSE MID CAP COMPANIES (Cents Per Share)

COMPANY	CODE	CLOSE	PREVIOUS	1D%	1M%	YTD%
Aspen Pharmacare Hldgs Ltd	APN	21672	21701	-0.13	0.68	6.50
African Rainbow Min Ltd	ARI	19447	19750	-1.53	17.25	-2.77
AVI Ltd	AVI	8438	8471	-0.39	-7.27	2.81
Barloworld Ltd	BAW	8474	8487	-0.15	38.92	7.27
Bidvest Ltd	BVT	23400	23173	0.98	-4.89	-7.25
Bytes Technology Grp PLC	BYI	11515	11350	1.45	-7.59	-19.59
Capital&Counties Prop plc	CCO	3167	3170	-0.09	-5.46	-2.55
Clicks Group Ltd	CLS	28758	28407	1.24	-3.31	-11.71
Dis-Chem Pharmacies Ltd	DCP	3100	3110	-0.32	-8.31	1.01
Distell Group Hldgs Ltd	DGH	94	94.5	-0.53	0.00	9.30
Exxaro Resources Ltd	EXX	18412	18688	-1.48	5.14	-9.96
Fortress Real Est INV A	FFA	18.14	17.89	1.40	-3.30	-98.69
Fortress Real Est INV B	FFB	1420	1415	0.35	-8.51	100.00
Growthpoint Prop Ltd	GRT	1037	1037	0.00	-7.74	-11.22
Harmony GM Co Ltd	HAR	16770	17615	-4.80	13.09	40.23
Hammerson plc	HMN	636	622	2.25	-2.30	-6.47
Investec Ltd	INL	11631	11660	-0.25	-5.98	-7.39
Investec plc	INP	11760	11762	-0.02	-5.56	-6.63
Italtile Ltd	ITE	951	952	-0.11	-3.26	-15.09
Life Healthc Grp Hldgs Ltd	LHC	1032	1002	2.99	-38.09	-43.82
MultiChoice Group Ltd	MCG	11601	11625	-0.21	5.29	43.19
Medclinic Int plc	MEI	22.5	22.5	0.00	-6.25	-13.46
Montauk Renewables Inc	MKR	6707	6650	0.86	-18.70	-61.01
Mr Price Group Ltd	MRP	15804	15670	0.86	-9.21	0.78
Momentum Met Hldgs Ltd	MTM	2065	2058	0.34	-0.48	-5.66
Ninety One Plc	N91	3935	3935	0.00	-2.11	-8.74
Nedbank Group Ltd	NED	21721	21506	1.00	-5.56	0.45
Northam Platinum Hldgs Ltd	NPH	13427	13945	-3.71	14.99	-4.39
NEPI Rockcastle N.V.	NRP	12465	12521	-0.45	-4.21	-1.37
Netcare Limited	NTC	1145	1129	1.42	-1.72	-19.59
Ninety One Limited	NY1	3837	3877	-1.03	-3.45	-10.71
Old Mutual Limited	OMU	1026	1013	1.28	-11.78	-21.44
OUTsurance Group Ltd	OUT	3870	3927	-1.45	-8.23	-8.29
Pick n Pay Stores Ltd	PIK	1949	1930	0.98	5.47	-16.24
Pepkor Holdings Ltd	PPH	1725	1710	0.88	-6.86	-12.12
Quilter Plc	QLT	2368	2358	0.42	-6.40	-2.47
Redefine Properties Ltd	RDF	375	374	0.27	-6.95	-2.60
Remgro Ltd	REM	11752	11904	-1.28	-3.92	-27.67
Resilient REIT Limited	RES	4277	4243	0.80	-7.78	-3.43
Reinet Investments S.C.A	RNI	43321	43289	0.07	-5.39	-7.08
Sappi Ltd	SAP	5230	5311	-1.53	6.30	18.33
Santam Limited	SNT	29614	29603	0.04	-0.18	3.34
The Spar Group Ltd	SPP	9203	8947	2.86	6.28	-21.94
Sirius Real Estate Ltd	SRE	2234	2232	0.09	1.22	0.86
Tiger Brands Ltd	TBS	19724	19600	0.63	-3.59	-2.01
Transaction Capital Ltd	TCP	270	260	3.85	-3.78	-66.17
The Foschini Group Limited	TFG	9461	9290	1.84	-7.54	-14.74
Thungela Resources Ltd	TGA	13736	13815	-0.57	15.08	-10.69
Telkom SA SOC Ltd	TKG	2529	2500	1.16	-7.29	-14.96
Truworths Int Ltd	TRU	7358	7150	2.91	-5.42	-1.04
#REF!	#REF!	#REF!	#REF!	#REF!	#REF!	#REF!
Woolworths Holdings Ltd	WHL	5650	5570	1.44	-7.07	-21.75
Zeda Limited	ZZD	1180	1163	1.46	10.28	-7.45

LOCAL EQUITIES | JSE SMALL CAP COMPANIES (Cents Per Share)

COMPANY	CODE	CLOSE	PREVIOUS	1D%	1M%	YTD%
ArcelorMittal SA Limited	ACL	119	119	0.00	0.00	-27.44
ADVTECH Ltd	ADH	2853	2800	1.89	0.49	16.26
Altron Limited A	AEL	1125	1125	0.00	2.27	9.76
AECI Limited	AFE	9240	9297	-0.61	-0.54	-15.76
Alexander Forbes Grp Hldgs	AFH	620	644	-3.73	-1.74	-6.06
Afrimat Limited	AFT	6343	6320	0.36	10.16	0.68
African Rainbow Cap Inv	AIL	520	519	0.19	2.77	6.34
Adcock Ingram Hldgs Ltd	AIP	5380	5500	-2.18	-2.61	-10.48
Astral Foods Ltd	ARL	14128	14167	-0.28	-1.90	-3.61
Attacq Limited	ATT	1053	1043	0.96	-0.38	14.21
Brait PLC	BAT	132	135	-2.22	-1.49	-27.47
Blue Label Telecoms Ltd	BLU	406	406	0.00	-4.47	4.64
Coronation Fund Mngrs Ld	CML	2980	3019	-1.29	-0.77	-4.36
Curro Holdings Limited	COH	1038	1036	0.19	-5.64	-10.90
Cashbuild Ltd	CSB	14350	14100	1.77	7.89	-14.04
DRD Gold Ltd	DRD	1555	1644	-5.41	1.50	-1.40
Dataatec Ltd	DTC	3520	3500	0.57	-7.95	-13.09
Emira Property Fund Ltd	EMI	942	950	-0.84	10.82	10.18
Equites Prop Fund Ltd	EQU	1180	1202	-1.83	-5.98	-15.41
Famous Brands Ltd	FBR	5141	5073	1.34	-5.62	-11.25
Fairvest Limited B	FTB	346	348	-0.57	-5.21	0.58
Grindrod Ltd	GND	1280	1265	1.19	1.59	11.69
Hosken Cons Inv Ltd	HCI	17050	17050	0.00	0.38	-15.84
Hudaco Industries Ltd	HDC	15857	16000	-0.89	-0.13	-1.28
Hyprop Inv Ltd	HYP	2821	2750	2.58	-3.42	-9.32
Investec Property Fund Ltd	IPF	680	684	-0.58	-10.53	-15.00
JSE Ltd	JSE	8330	8352	-0.26	-5.34	-9.89
KAP Industrial Hldgs Ltd	KAP	256	259	-1.16	-3.40	-2.29
Karooooo Ltd	KRO	51302	51152	0.29	-0.17	8.01
PSG Konsult Limited	KST	1483	1480	0.20	0.14	-3.39
Libstar Holdings Ltd	LBR	400	396	1.01	14.61	14.29
Lighthouse Properties plc	LTE	792	772	2.59	-1.00	7.76
Industrials REIT Limited	MLI	0.6	0.6	0.00	20.00	-14.29
MAS P.L.C	MSP	1600	1590	0.63	-0.68	-7.57
Metair Investments Ltd	MTA	1198	1188	0.84	-9.10	-32.51
Motus Holdings Ltd	MTH	8200	8050	1.86	-6.79	-19.21
Murray & Roberts Hldgs	MUR	118	117	0.85	1.72	-20.81
Oceana Group Ltd	OCE	7340	7475	-1.81	3.38	3.86
Omnia Holdings Ltd	OMN	5577	5741	-2.86	-6.74	-14.69
Pan African Resource plc	PAN	545	567	-3.88	7.92	33.25
PPC Limited	PPC	321	332	-3.31	-5.31	-19.55
Raubex Group Ltd	RBX	3025	2957	2.30	-3.48	9.13
RFG Holdings Limited	RFG	1299	1290	0.70	-5.66	-3.78
Reunert Ltd	RLO	6300	6375	-1.18	-4.50	5.11
SA Corp Real Estate Ltd	SAC	250	249	0.40	-0.40	7.76
Super Group Ltd	SPG	2642	2648	-0.23	1.30	-11.19
Stor-Age Prop REIT Ltd	SSS	1318	1310	0.61	-2.59	0.92
Southern Sun LTD	SSU	506	498	1.61	-0.78	-3.62
Sun International Ltd	SUI	3800	3660	3.83	5.41	-7.32
Tharisa plc	THA	1590	1571	1.21	22.12	5.23
Tsogo Sun Gaming Ltd	TSG	1138	1123	1.34	3.08	-7.10
Vukile Property Fund Ltd	VKE	1496	1459	2.54	2.33	5.95
Wilson Bayly Hlm-Ovc Ltd	WBO	13376	13682	-2.24	-3.70	2.84

10-YEAR BOND YIELD | SELECTED ITEMS (Basis Point Change)

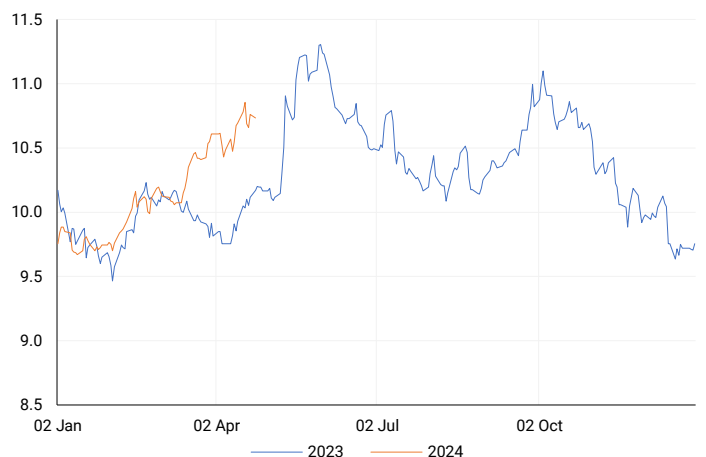
REGION	YIELD	1D	1M	1Y
United States	4.61%	0	41	104
United Kingdom	4.20%	0	28	45
Germany	2.48%	0	16	1
Japan	0.88%	0	15	42
South African 10Y	11.03%	25	56	85

GLOBAL INTEREST RATES | SELECTED ITEMS

REGION	DATE CHANGED	CURRENT RATE
United States	Wed, 26 Jul '23	5.25%-5.50%
United Kingdom	Thu, 03 Aug '23	5.25%
European	Thu, 27 Jul '23	4.25%
SA Repo Rate	Thu, 25 May '23	8.25%
SA Prime Rate	Thu, 25 May '23	11.75%

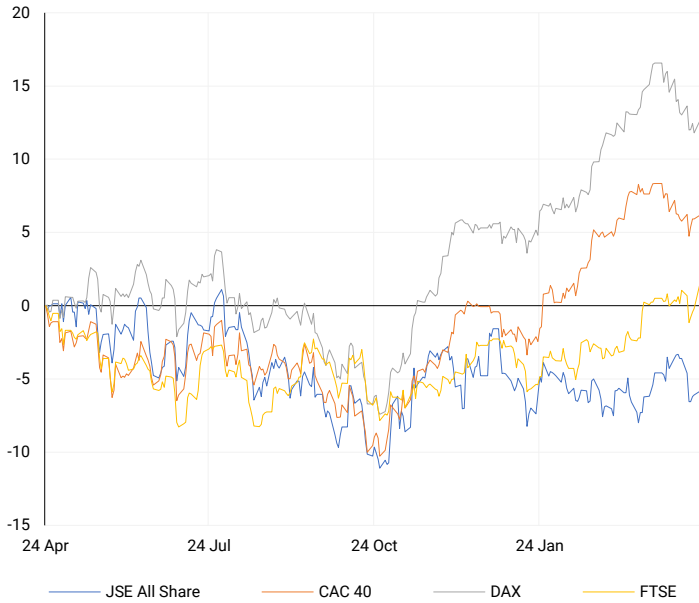
SOUTH AFRICAN 10-YEAR

2023 vs 2024 to date



EUROPEAN INDICES

Normalised percentage performances

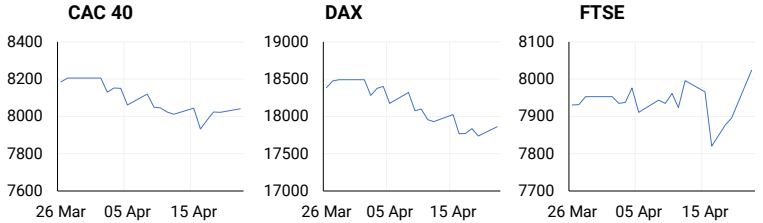


EUROPEAN MARKET SUMMARY

SELECTED ITEMS

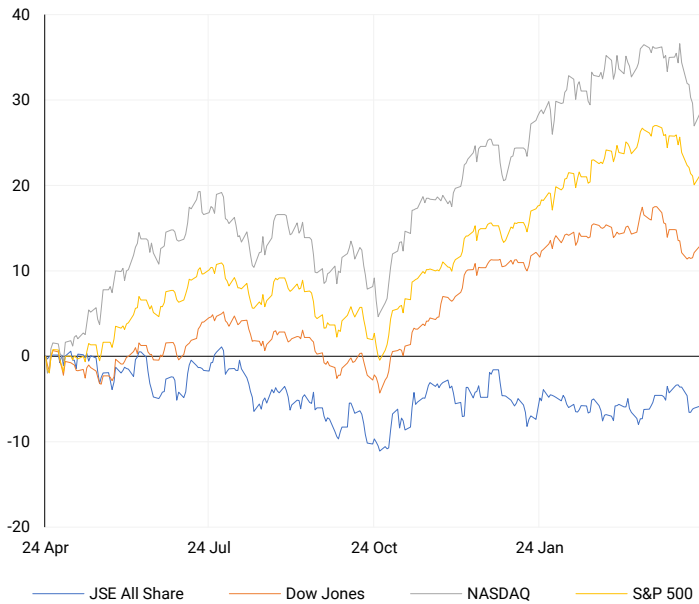
European markets kicked off the new trading week positively after a week of uncertainty and adjustments in interest rate expectations. The pan-European benchmark Stoxx 600 index closed 0.6% higher, with most sectors seeing gains. Telecoms stocks led the way, rising by 2.1%, while autos experienced a slight decline of 0.8%. Meanwhile, in the UK, the housing market is displaying resilience, with asking prices of properties listed for sale increased by 1.1% in April to £372,324 (\$458,893), just £570 short of the record set in May 2023.

EUROPEAN INDICES	CLOSE	PREVIOUS	1D%	5D%	1M%	YTD%
CAC 40	8040.36	8022.41	0.22	-0.06	-1.37	6.59
DAX 30	17860.80	17737.36	0.70	-0.92	-1.90	6.62
Eurostoxx 50	4938.50	4917.55	0.43	-0.91	-1.84	9.22
FTSE	8023.87	7895.85	1.62	0.73	1.17	3.76



AMERICAN INDICES

Normalised percentage performances



AMERICAN MARKET SUMMARY

SELECTED ITEMS

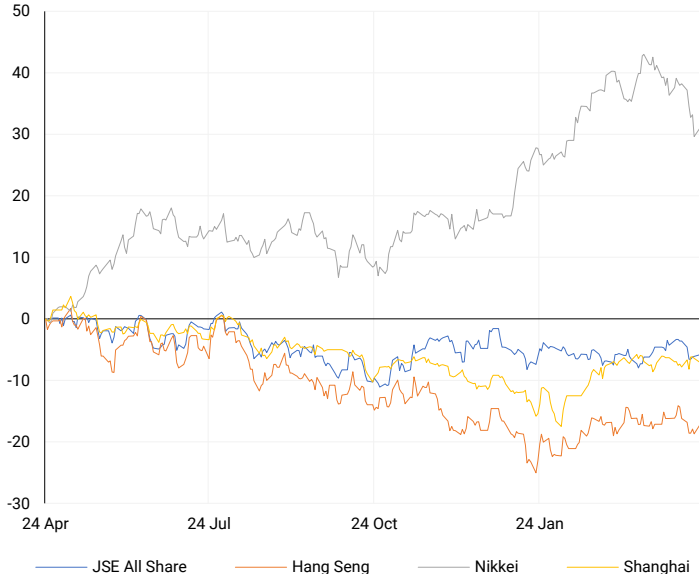
On Monday, Wall Street stocks closed higher after recent market sell-offs, with investors focusing on a busy week of quarterly earnings reports from key companies to gauge the health of the U.S. economy. Megacap growth stocks, including Alphabet, Amazon.com, and Apple, saw gains ranging from 0.5% to 1.5%. Nvidia rebounded strongly, rising by 4.4% after a 10% drop in the previous session. However, Tesla shares fell by 3.4% as the electric vehicle maker reduced prices in several major markets, including China and Germany, following similar cuts in the United States.

AMERICAN INDICES	CLOSE	PREVIOUS	1D%	5D%	1M%	YTD%
Dow Jones	38239.98	37986.40	0.67	1.34	-3.13	1.46
Nasdaq	15451.31	15282.01	1.11	-2.73	-5.95	2.93
S&P 500	5010.60	4967.23	0.87	-1.01	-4.27	5.05
US VIX	16.94	18.71	-9.46	-11.91	29.71	36.06



ASIAN INDICES

Normalised percentage performances



ASIAN MARKET SUMMARY

SELECTED ITEMS

Asian shares continued their upward trend on Tuesday, following the positive momentum from Wall Street. Flash figures from au Jibun Bank showed that Japan's business activity in April expanded at its fastest pace in eight months. The country's composite purchasing managers index rose to 52.6 from March's 51.7, reaching its joint-highest level since August. Japan's manufacturing PMI slightly improved to 49.9, indicating a softer decline from March's 48.2, while the services PMI increased to 54.6 from 54.1 in March.

ASIAN INDICES	CLOSE	PREVIOUS	1D%	5D%	1M%	YTD%
Hang Seng	16511.69	16224.14	1.77	-0.53	0.07	-3.14
Nikkei 225	37438.61	37068.35	1.00	-4.57	-8.44	11.88
Shanghai	3044.60	3065.26	-0.67	-0.42	-0.11	2.34



COMMODITIES MARKET SUMMARY

SELECTED ITEMS

Gold prices dropped this morning to their lowest point in over two weeks, as worries about an escalation in the Middle East eased. Investors also took profits while awaiting important U.S. data for insights into the Federal Reserve's interest rate plans. Meanwhile, oil prices rose slightly earlier today after a decline in the previous session, as investors weighed the geopolitical risks in the Middle East.

COMMODITY	LAST	CLOSE	% CHG	1D%	5D%	YTD%
Brent Crude	87.45	87.21	0.28	0.00	-3.51	13.14
Gold	2310.22	2391.47	-3.40	0.00	0.35	15.92
Palladium	1003.00	1035.50	-3.14	0.00	-0.72	-5.63
Platinum	922.50	943.20	-2.19	0.00	-4.19	-4.46
Silver	27.03	28.67	-5.75	0.00	-0.67	20.54

BRENT CRUDE

One-year



PLATINUM

One-year



GOLD

One-year



CURRENCY PAIR	LAST	CLOSE	% CHG	1D%	5D%	YTD%
USDZAR	19.19	19.08	0.60	0.00	0.52	4.12
GBPZAR	23.70	23.60	0.40	0.00	-0.10	1.32
EURZAR	20.45	20.33	0.59	0.00	0.77	0.67
AUDZAR	12.39	12.24	1.18	0.00	0.12	-1.72
EURUSD	1.07	1.07	0.01	0.00	0.26	-3.49
USDJPY	154.78	154.60	0.11	0.00	0.25	9.62
GBPUSD	1.23	1.24	-0.20	0.00	-0.61	-2.83
USDCHF	0.91	0.91	0.23	0.00	-0.22	8.19

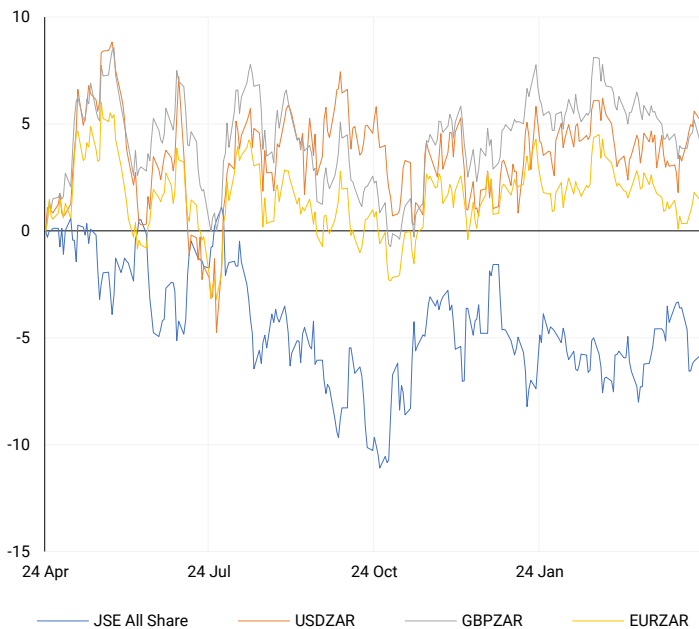
CURRENCY MARKET SUMMARY

SELECTED ITEMS

South Africa's rand weakened on Monday following a week of turbulent trading driven by tensions in the Middle East. Last week, the rand declined amid reports of an Israeli strike on Iran, fuelling concerns of increased conflict and prompting traders to seek safety in the U.S. dollar. Meanwhile, the yen remained near a recent 34-year low this morning, supported by a strong U.S. dollar. Investors remained vigilant for potential intervention measures as they awaited key U.S. inflation data and the Bank of Japan's rate decision later this week.

CURRENCY PAIRS vs JSE ALL SHARE

Normalised percentage performances



USDZAR

One-year



EURUSD

One-year



SOURCES | JSE, IRESS, MONEYWEB, CNBC, BBC, CNN

Disclaimer: This note is prepared for Sanlam Private Wealth (Pty) Ltd, by K2013143132 (Pty) Ltd trading as ThompsonGreen. ThompsonGreen is an independent company contracted to Sanlam Private Wealth (Pty) Ltd. The views expressed in this note are those of ThompsonGreen and/or its analysts and not necessarily the views of Sanlam Private Wealth (Pty) Ltd, Sanlam or any officer or agent thereof. K2013143132 (Pty) Ltd trading as ThompsonGreen is a research house and not a registered broker, financial adviser or financial service provider. Our editors and customer services teams also do not give personal investment advice. The information in this document is general advice only and may not be appropriate to your particular investment objectives, financial situation or particular needs. Before investing, or if you are in any doubt about your personal situation, you should seek professional advice from a stockbroker or independent financial adviser authorised by the Financial Sector Conduct Authority.